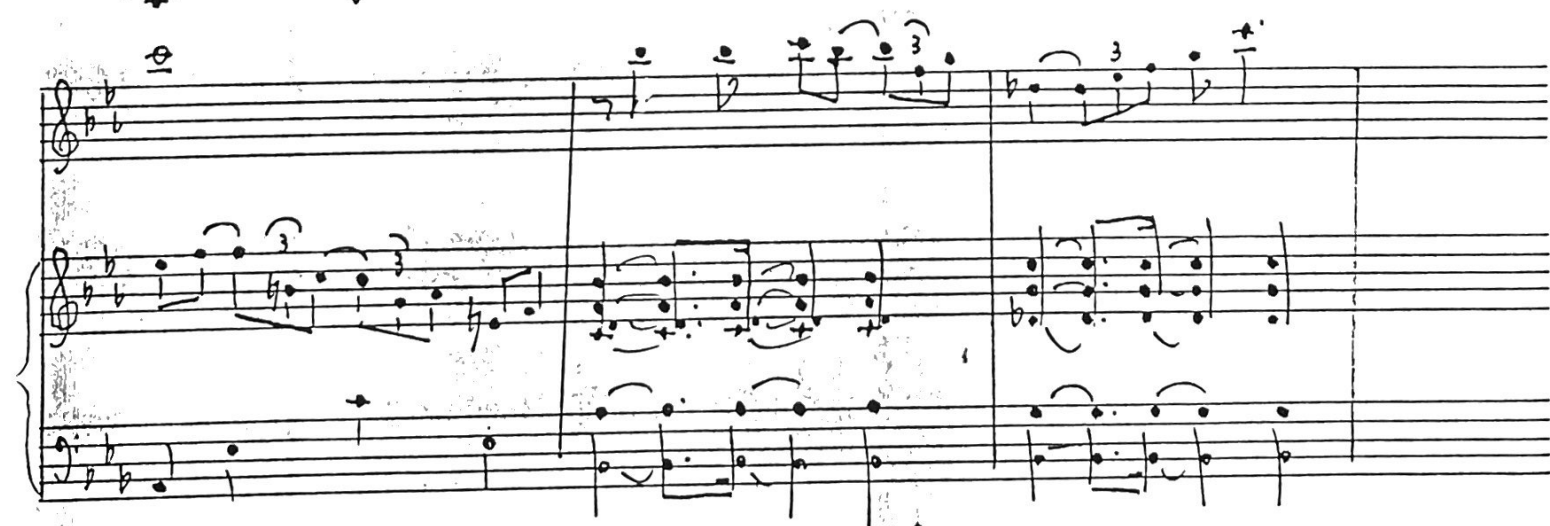
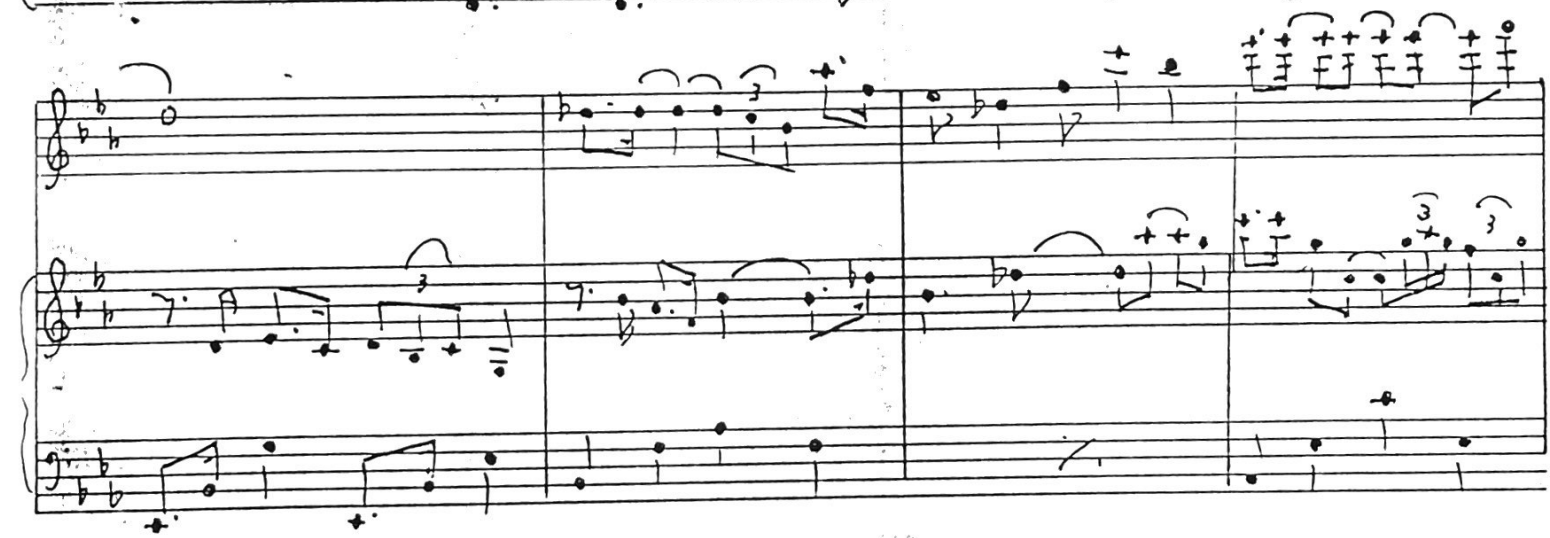


1 ~~Blues~~ Amarecen ~~Blues~~ para flauta dulce en F3 y piano Hans Lewitus



2

~~Blue~~ Amaween

A handwritten musical score for a piece titled "Amaween". The score is written on a 12-staff system, organized into four systems of three staves each. The notation includes treble and bass clefs, a key signature of one sharp (F#), and a 4/4 time signature. The music features various rhythmic patterns, including eighth and sixteenth notes, and rests. There are several triplets marked with a "3" and a slur. The score is divided into measures by vertical bar lines. The handwriting is in black ink on a white background.



~~Bossa~~ Amoreen

Lento

A handwritten musical score for a piece titled "Amoreen" (with "Bossa" crossed out). The tempo is marked "Lento". The score is written on ten staves, each with a treble clef. The key signature is one flat (B-flat), and the time signature is common time (C). The notation includes various musical symbols such as notes, rests, accidentals, and articulation marks. The first staff begins with a whole rest followed by a series of eighth notes. The second staff continues with eighth notes and a half note. The third staff features a series of eighth notes and a half note. The fourth staff has a half note and a quarter note. The fifth staff contains a half note and a quarter note. The sixth staff has a half note and a quarter note. The seventh staff features a half note and a quarter note. The eighth staff contains a half note and a quarter note. The ninth staff has a half note and a quarter note. The tenth staff concludes with a half note and a quarter note. The score is written in a clear, legible hand.